



FP401

Drum Cover For LA, BW Series (50 gallons)



FP411

Drum Cover For SK Series (50 gallons)



FP501

Follower Plate (50 gallons)



FP101

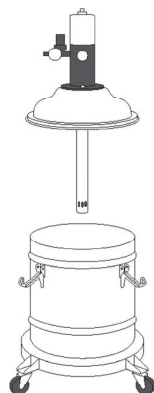
Follower Plate (5 gallons)

Drum Cover Specification

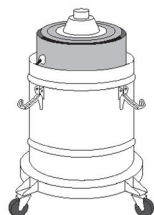
Model	Compatible Container	OD	ID
FP101	20L/5 gallons	278 mm	38 mm
FP501	200L/50 gallons	584 mm	38 mm



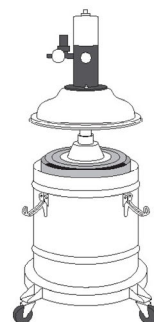
Place the follower plate into the original container, ensuring the bowl is filled with oil.



Separate the container body from the base.



Move the original barrel into the container.



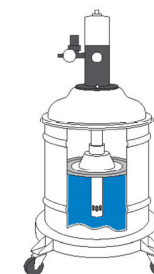
Align the suction tube with the central hole of the follower plate and insert.

without



It will be hollow after sucking and also not easy to suck.

with



The grease can be sucked evenly and smoothly with follower plate.