



We Make the World Smoother

Quantitative lubricant distribution system | Air Operated Fluid Pump | Hydraulic Press | Shock Absorbers Spring Compressor

System Components

Oil or Grease Pump
Supply oil or grease into system

Strainer
Filter impurities in oil or grease

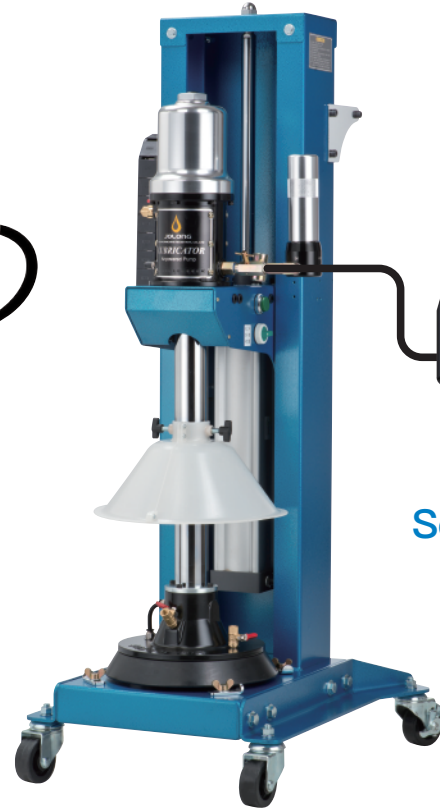
Fluid Regulator
Adjust the final feeding pressure

Precise Fluid Dispenser
Quantitative grease or oil output

Filling mold or production line
Depend on customer needs



Automatic System



Semiautomatic System



Application

Oil Seals

Caster Wheel

Parts

Car Parts

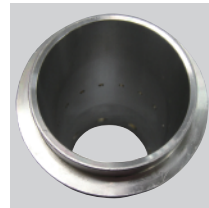
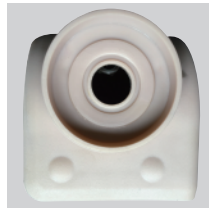
Bearing

Air Tools Parts

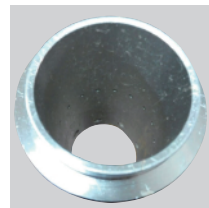
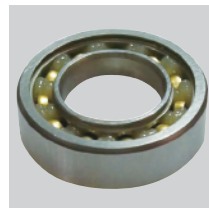
Parts Filling Grease

Ball Joint

Before



After





P-020A Pressure Stabilizer

Reducing the pulsating effect of fluid output during pneumatic pump operation results in more stable and smoother fluid flow.



OFF-250A Strainer

Standard 100 mesh stainless steel filter, capable of filtering fine particles in oil or grease. When clogged, remove the upper and lower plugs and use an air gun to blow out debris. The filter can be reused without consumables.

Model	Inlee	Outlet	Maximum Regulated Fluid Pressure (MPa)	Mesh Number	Weight
P-020A	3/8"PS(f)	3/8"PS(f)	20(200 kg)	-	≒0.6 kg
OFF-250A	3/8"PS(f)	1/4"PS(f)	25(250 kg)	60 mesh、100 mesh、200 mesh	≒1.0 kg



RD100 ~ RD400

Fluid Regulator

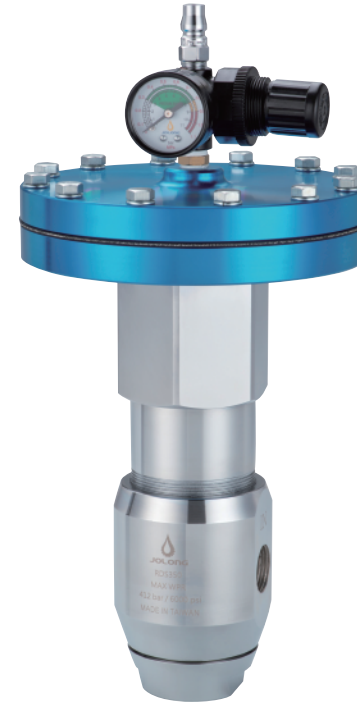
Spring type, more durable



RDS110

Fluid Regulator

Diaphragm type, more sensitive,
suitable for low flow rates



RDS350 / RDS351

Fluid Regulator / High-temperature Fluid Regulator

Suitable for high-viscosity fluids, e.g., hot melt adhesive

Fluid Regulator Series 1kg/cm²=0.098MPa

Model	Inlet	Outlet	Maximum Regulated Fluid Pressure (MPa)	Pressure Range (MPa)	Weight
RD100	3/8"PS(f)	3/8"PS(f)	39.2(400 kg)	2~9.8(20~100 kg)	≈1.8 kg
RD250				2~25(20~250 kg)	
RD400				4.9~39.2 (50~400 kg)	
RDS110	1/4"PS(f)	1/4"PS(f)	10.8(110 kg)	1~9.8 (10~100 kg)	≈1.6 kg
RDS350	3/4"PS(f)	3/4"PS(f)	34.3(350 kg)	1.7~31 (17~310 kg)	≈7.5 kg
RDS351					



BD05
BD1
BD5



BD10



BD1A



BD200
BD500
BD1000



AD01



AD1



AD5



AD30

Precise Dispenser Series

Model	Dispensing volume (cm ³ /stroke) (±1%~2%)	Minimum Operating Pressure (MPa)		Operating Pressure Range (MPa)		Bearable Pressure on Lubricant (MPa)	Available Fluids	Weight	Recommended Pressure Regulator
		Lubricant	Air Pressure	Lubricant	Air Pressure				
BD05	0.05~0.5	4.9 (50 kg)		4.9~14.7 (50~150 kg)		20.6 (210 kg)	<ul style="list-style-type: none"> Grease NLGI #0~#3 Lubricating oil Engine oil Gear oil Semi-solid Fluid High viscosity Fluid Liquid Non-curing adhesives Solvent-free Free of particles 	≒1.6 kg	RD250
BD1	0.1~1							≒1.6 kg	
BD1A	0.1~1							≒2.0 kg	
BD5	0.5~5							≒1.7 kg	
BD10	1~10							≒2.7 kg	
BD200	20~200	0.3 (3 kg)		4.9~9.8 (50~100 kg)	0.3~0.7 (3~7 kg)	11.8 (120 kg)		≒7.7 kg	RD100
BD500	100~500							≒13 kg	
BD1000	200~1000							≒22 kg	
AD01	0.01~0.1	1.5 (15 kg)		1.5~4.9(15~50kg)		5.0 (50 kg)		≒0.9 kg	RDS110+RD100
AD1	0.05~1			≒1.2 kg					
AD5	0.5~5			≒1.6 kg					
AD30	3~30			≒2.3 kg		12.0 (120 kg)		RD100	



CD1
Adjustable Pneumatic Valve



CD2 / CD3 / CD4
Pneumatic Valve

Pneumatic Valve Series Discharge volume (cc, tolerance $\pm 10\%$), controlled by timer

Model	Specifications	Air Inlet	Material Inlet	Material Outlet	Minimum Operating Pressure (MPa)		Operating Pressure Range (MPa)		Bearable Pressure on Lubricant (MPa)	Available Fluids	Weight
					Air Pressure	Lubricant	Air Pressure	Air Pressure			
CD1	Adjustable pneumatic valve	1/8"PS(f)	1/4"PS(f)	1/4" M16 x 1.0	0.3 (3 kg)	1.5-12 (15-120 kg)	0.3-0.7 (3-7 kg)	15 (150 kg)	<ul style="list-style-type: none"> • NLGI No.0-No.3 Grease • Engine Oil • Gear Oil • Non-Solidifying Colloid (Without Organic Solvents) 	≈0.6 kg	
CD2	Pneumatic valve			1/4"PS(f)						≈1.4 kg	
CD3	High-flow pneumatic valve	1/8"PS(f)	1/4"PS(f)	3/8"PS(f)		1.5-20 (15-200 kg)	0.3-0.7 (3-7 kg)	20 (200 kg)		≈1.4 kg	
CD4	Stainless steel pneumatic valve			1/4"PS(f)						≈1.4 kg	



EB04

Control System for Dispenser

Feature

- (1) Suitable for metering and pneumatic valves with volumes up to 30 cc.
- (2) Compatible with 110V or 220V power supply (convertible to 24V).
- (3) Include a pneumatic solenoid valve to control the metering valve ON/OFF.
- (4) Use a timer to ensure the opening time to ensure complete discharge
- (5) Include an air regulator with a pressure gauge for easy adjustment.
- (6) Can be activated via limit switch, foot switch, or photoelectric switch.
- (7) Optional counter can be added.
- (8) Input voltage: single phase 110V ~ 220V
- (9) Maximum input air pressure: 9 bar/135psi

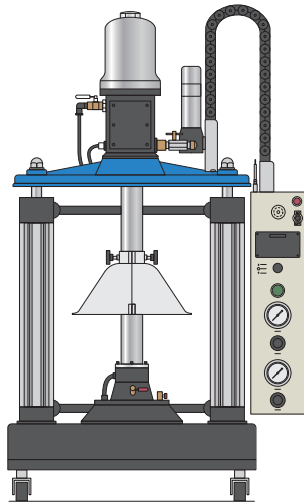


EB10

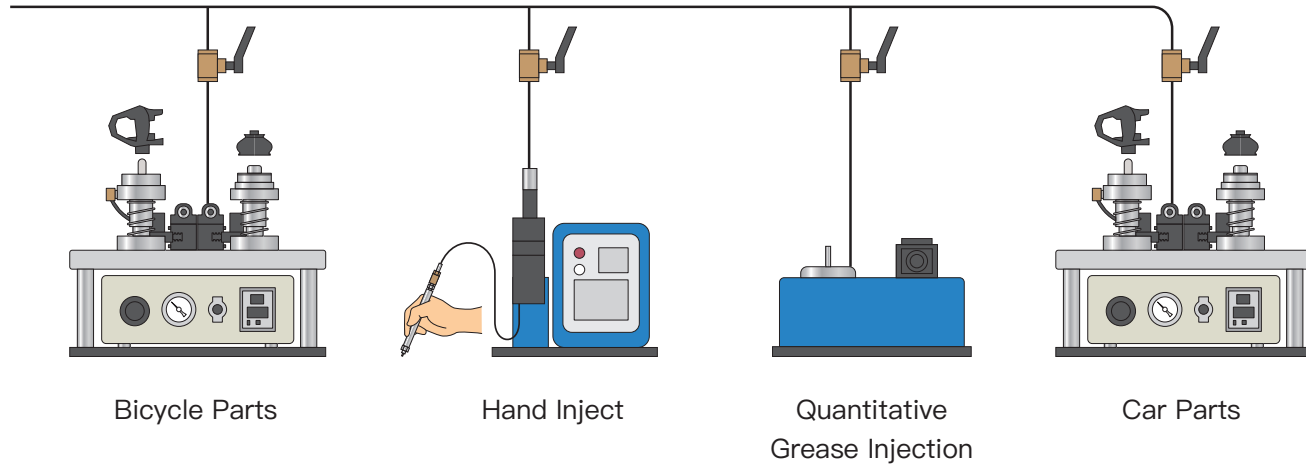
Control System for Dispenser

Feature

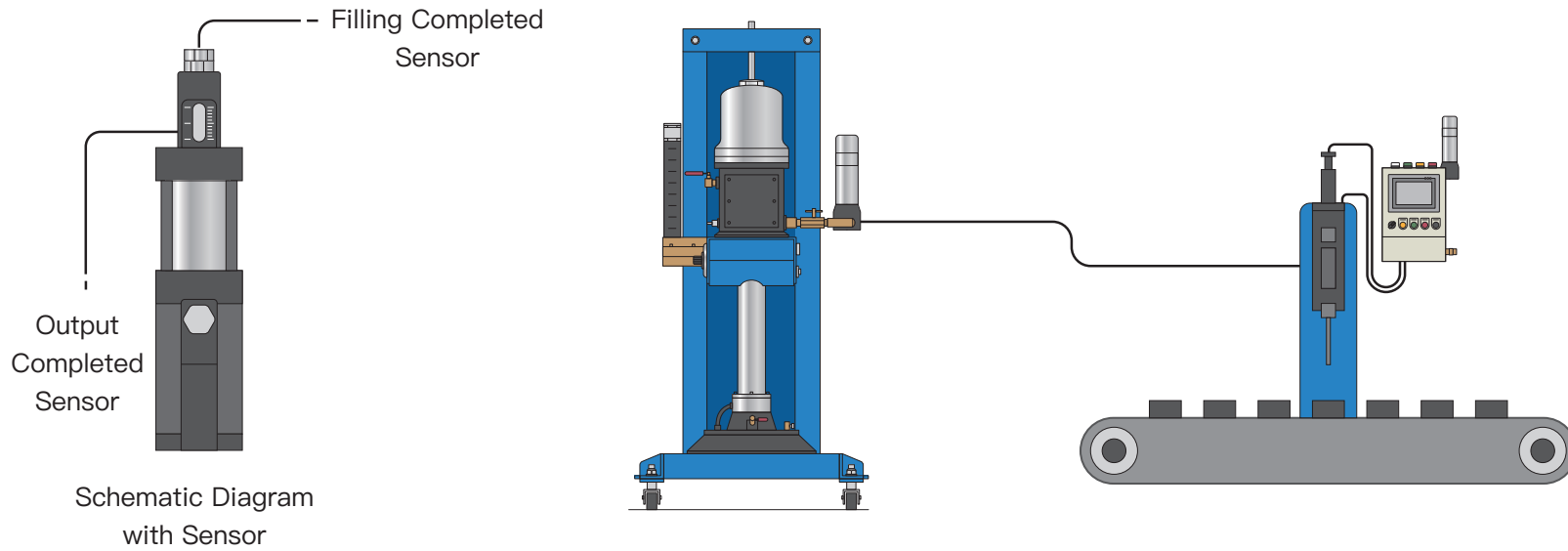
- (1) Suitable for reciprocating metering valves with volumes above 200 cc.
- (2) Equipped with proximity sensor, allowing the next operation without waiting for refill time.
- (3) Input voltage: Single-phase 110V~220V.
- (4) Maximum input air pressure: 9 bar / 135 psi.



One-to-many System



Action Confirmation Detection





Pressurized Fluid Pump

Feature

- (1) Dual pneumatic cylinder design ensures smoother machine operation, more balanced actuation forces, and more consistent fluid output.
- (2) Patented pressure plate design allows a tighter fit between the plate and container, easily handling high-viscosity fluids and significantly reducing residual material at the bottom and inside the container.
- (3) Pneumatic cylinder-assisted pressure enables use with high-viscosity grease or grease that is difficult to extract with conventional pumps.
- (4) Compatible with 1 kg easy-open canisters of cleanroom-specific grease.
- (5) Compact structure suitable for integration into production lines.
- (6) Suitable for containers with inner diameters of 86, 100, or 190 mm and heights up to 190 mm, including straight or conical cans. (For other container types, please contact with us.)

Usage

- (1) Available for normal #00-#3 grease. For special grease please contact with us.

HV106 Series (1~5Kg)

Model	Inner Diameter of Container	Air Input Pressure	Pressure Ratio	Grease Output Pressure	Deliver Rate	Hose Length	N.W.	G.W.	CUFT
HV106-86	80-86 mm	3-5 bar 40-70 psi	55:1	165-275 bar 2300-3850 psi	2 g/cycle	N/A	21 kg	37.5 kg	8.8'
HV106-100	85-100 mm								
HV106-190	175-190 mm								



HV107
(20L) (25L Optional Accessory)



HV103
(200L)

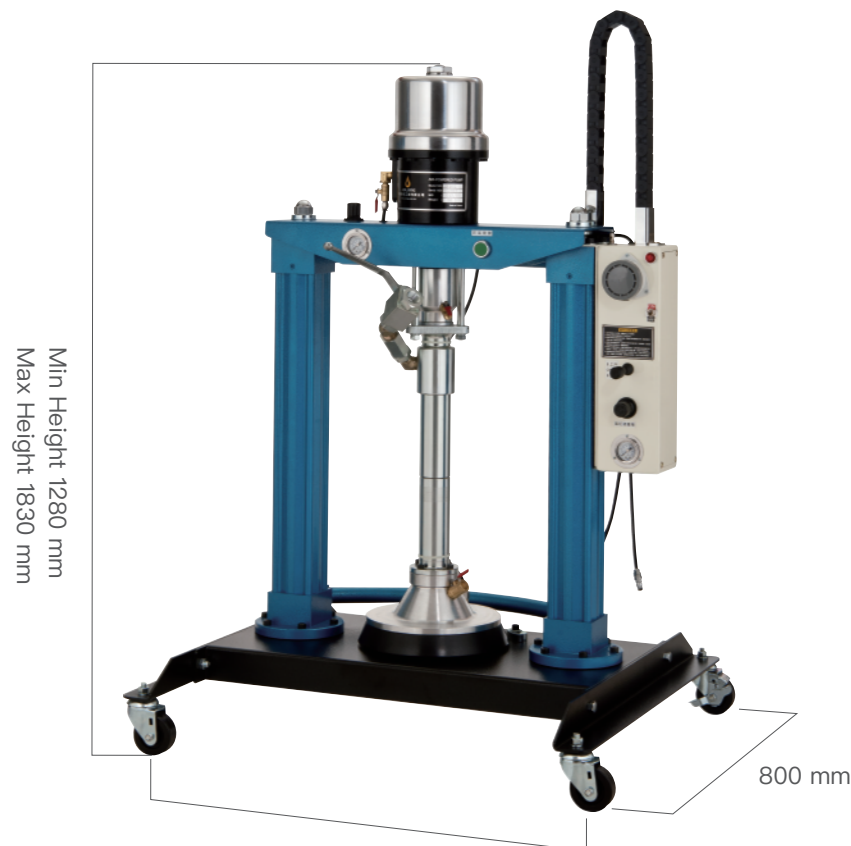
Pressurized Fluid Pump / Grease Pump Feature

- (1) Dual pneumatic cylinder structure design brings higher stability during operation, more average actuation force and smoother fluid output. Include dust cover to avoid dust or foreign matter contamination grease.
- (2) Special design of follower plate which enables the follower plate and container can be combined tighter. This can be used on any container with taper and high viscosity fluid and can further reduce the residual materials inside the container or at the bottom of container significantly.
- (3) The pneumatic cylinder auxiliary press is suitable for high viscosity grease or the grease that hard to extract by normal pump.
- (4) The pump is made of aluminum alloy by forging.

Usage

- (1) Available for normal 00#~3# grease. For special grease please contact with us.

Model	Capacity	Air Input Pressure	Pressure Ratio	Grease Output Pressure	Deliver Rate	Hose Length	N.W.	G.W.	CUFT
HV107	20L	4~9 bar 60~130 psi	45 : 1	180~405 bar 2700~5850 psi	9 g/cycle	-	49 kgs	69.5 kgs	17.7'
HV103	200L					-	173 kgs	215 kgs	63'



HV102
(20L) (25L Optional Accessory)

Pressurized Fluid Pump / Grease Pump Feature

- (1) Dual pneumatic cylinder structure design brings higher stability during operation, more average actuation force and smoother fluid output.
- (2) Special design of follower plate which enables the follower plate and container can be combined tighter. This can be used on any container with taper and high viscosity fluid and can further reduce the residual materials inside the container or at the bottom of container significantly.
- (3) The design of the non-rubber seal can extract special fluids such as grease or ink.
- (4) The pneumatic cylinder auxiliary press is suitable for high viscosity grease or the grease that hard to extract by normal pump.
- (5) The large output flow design is suitable for different production lines or demand for large flow.
- (6) The pump is made of aluminum alloy.

Usage

- (1) Available for normal 00#~3# grease. For special grease please contact with us.
- (2) It can extract ink or special lubricants containing fibers.



HV104
(200L)

Model	Capacity	Air Input Pressure	Pressure Ratio	Grease Output Pressure	Deliver Rate	Hose Length	N.W.	G.W.	CUFT
HV102	20L	3~7 bar 40~100 psi	50 : 1	150~350 bar 2000~5000 psi	26 g/cycle	-	97.5 kgs	125 kgs	28.2'
HV104	200L					-	201 kgs	262.8 kgs	64.9'



High Viscosity Fluid Pump / Grease Pump With Dust Cover Feature

- (1) Pump moves and oil suction are two separation system, it won't contaminating grease.
- (2) The special design of the follow plate is for the container with taper.(drum inner dimension $\phi 295 \sim \phi 275$).
- (3) Typically used in workshops, service stations, fleet maintenance, mining, agriculture, armed forces, construction, trains, etc.
- (4) Adopting the pressure design of additional air cylinder makes the stiff grease easier to be sucked.
- (5) Suitable for original 5 gallon grease drum from every country.

Usage

- (1) General 00#~3# grease all can be infused into smoothly.
- (2) If you intend to use a special type of lubricant, please get in touch with us to confirm its suitability.
- (3) For HV302, it can extract ink or special lubricants containing fibers.

Model	Capacity	Air Input Pressure	Pressure Ratio	Grease Output Pressure	Deliver Rate	Hose Length	N.W.	G.W.	CUFT
HV301C	20L	4-9 bar 60-130 psi	45 : 1	180-405 bar 2700-5850 psi	9 g/cycle	-	71.5 kgs	94.0 kgs	21.1'
HV302		3-7 bar 40-100 psi	32 : 1	96-224 bar 1280-3200 psi	34 g/cycle	-	80.0 kgs	102.0 kgs	20.1'

CS10 / CS20

CS10 Quantitative lubricant distribution system Feature

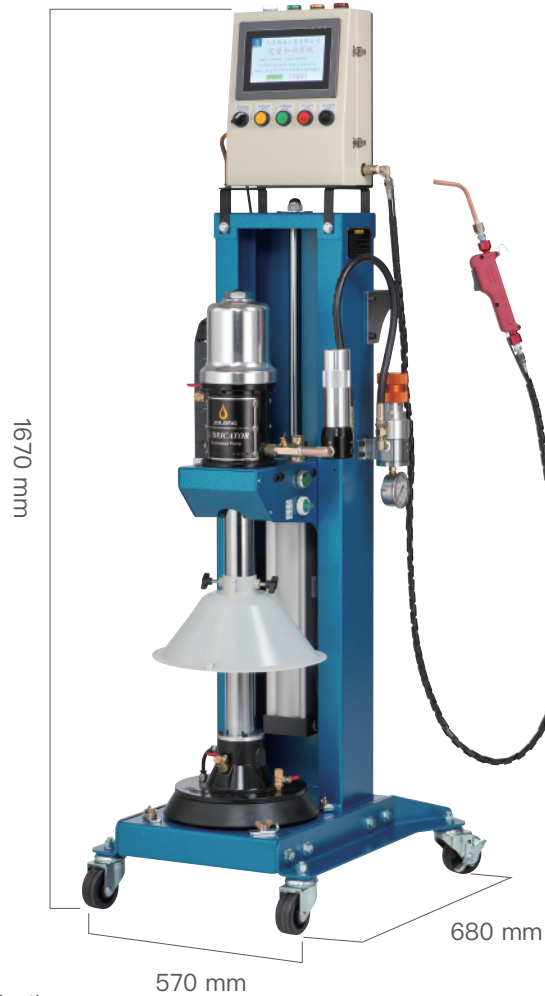
- (1) Suitable for quantitative grease filling from 10~100cc
- (2) Output tolerance: ± 1 cc.
- (3) Pressure resistant up to 500 kg.
- (4) Built-in memory for 8 preset values, expandable to 20.
- (5) There will be a sound reminder when the job is down.
- (6) Allows input of total grease volume; the total volume is deducted per operation, with an alert when grease is depleted.
- (7) Requires compatible oil/grease supply pump.
- (8) Suitable for use with grease.

CS20 Quantitative lubricant distribution system Feature

- (1) Suitable for metered oil dispensing above 100 cc.
- (2) Flow tolerance: ± 5 cc.
- (3) Pressure resistant up to 100 kg.
- (4) Built-in 8 sets of set value memory, which can be expanded to 20 sets.
- (5) There will be a sound reminder when the job is down.
- (6) Allows input of total oil volume; the total volume is deducted per operation, with an alert when oil is depleted.
- (7) Requires compatible oil/grease supply pump.
- (8) Suitable for use with lubricating oil.



Model	Input Voltage	Inlet	Outlet	Flow Range	Air Input Pressure	Max. Input Pressure	Min. Fluid Input Pressure	Working Temperature	Dimensions	N.W.
CS10	Single-phase 110-220V	1/4"PS(f)	1/4"PS(f)	0.1~2.5 L/min	3~7 Bar (43~100 psi) (3~7 kg)	500 bar (7200 psi) (500 kg)	10 bar (140 psi) (10 kg)	-10~50°C	250x120x330mm	7.3kg
CS20				1~35 L/min		100 bar (1400 psi) (100 kg)	0.35 bar (5 psi) (0.35 kg)		250x200x350mm	17.5kg



HV301CS10
HV301CS20
(20L)



HV302CS10
HV302CS20
(20L)

Pressurized Pneumatic Fluid Pump with Metering Control System

Feature

- (1) Pump moves and grease suction are two separation system, it won't contaminating grease.
- (2) The special design of the follow plate is for the container with taper.(drum inner dimension $\phi 295\sim\phi 275$).
- (3) Built-in metering system allows preset dispensing volumes to increase efficiency and reduce waste.
- (4) Adopting the pressure design of additional air cylinder makes the stiff grease easier to be sucked.
- (5) Suitable for original 5 gallon grease drum from every country.

Usage

- (1) General 00#~3# grease all can be infused into smoothly.
- (2) If you intend to use a special type of lubricant, please get in touch with us to confirm its suitability.
- (3) For HV302, it can extract ink or special lubricants containing fibers.

Model	Capacity	Air Input Pressure	Pressure Ratio	Grease Output Pressure	Deliver Rate	Hose Length	N.W.	G.W.	CUFT
HV301CS10	20L	4~9 bar 60~130 psi	45 : 1	180~405 bar 2700~5850 psi	9 g/cycle	10 ft	74.5 kgs	97.0 kgs	21.1'
HV301CS20									
HV302CS10		3~7 bar 40~100 psi	32 : 1	96~224 bar 1280~3200 psi	34 g/cycle	-			
HV302CS20									

Follower plate
heating temperature controller

Follower plate
temperature maintenance controller

Pump suction structure
temperature controller



Follower plate with heater

Heated Pressurized Fluid Pump / Grease Pump Feature

- (1) The supply pump is designed with multiple heating zones to provide excellent temperature control and application flexibility.
- (2) It is used for materials that require heating to become fluid and can be used to adjust the temperature of different parts.
- (3) Designed for heated material applications that require temperature control above 70°C (158°F) for conveying materials.
- (4) Heating and temperature control can be performed on the pressure plate, pump pumping structure, and output oil pipe.
- (5) The dual pneumatic cylinder structure design makes the machine operation more stable, the actuating force is more even, and the fluid output is smoother.
- (6) The special pressure plate design enables the pressure plate and the container to be more closely integrated, can easily handle tapered containers and high-viscosity fluids, and can significantly reduce the residual material inside and at the bottom of the container.
- (7) A pneumatic cylinder can be used for auxiliary pressurization, which can be used for high-viscosity grease or grease that is difficult to extract with a general pump.

Usage

- (1) Available for normal 00#~3# grease. For special grease please contact with us.

HV108 (20L) (25L Optional Accessory)

Model	Capacity	Air Input Pressure	Pressure Ratio	Grease Output Pressure	Deliver Rate	Hose Length	N.W.	G.W.	CUFT
HV108	20L	2~5 bar 30~75 psi	80 : 1	160~400 bar 2400~6000 psi	2 g/cycle	N/A	55 kgs	75 kgs	18'



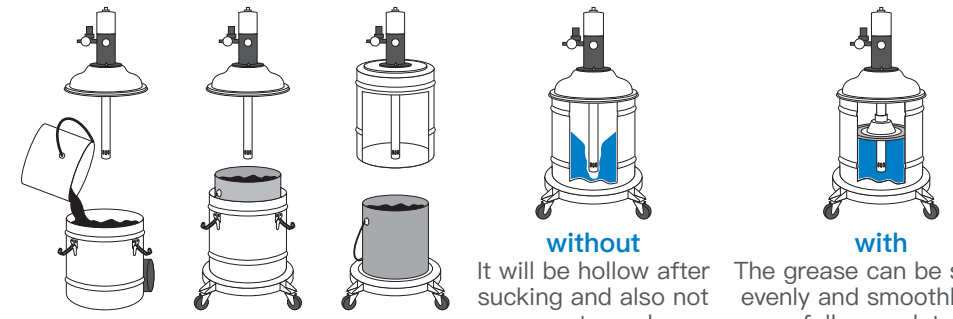
SK101

SK201

SK301

FP101

Follower Plate (5 gallons)



without
It will be hollow after sucking and also not easy to suck.

with
The grease can be sucked evenly and smoothly with follower plate.

Air Operated Fluid Pump / Grease Pump Feature

- (1) Pump moves and grease suction are two separation system, it won't contaminating grease.
- (2) Typically used in workshops, service stations, fleet maintenance, mining, agriculture, armed forces, construction, trains, etc.
- (3) Low noise, smooth greasing, no disjointed greasing.
- (4) The pump is made of aluminum alloy by forging.
- (5) The inner diameter of the barrel is 350mm, which can accommodate 5-gallon containers of original grease from various countries.

Usage

- (1) General 00#~3# grease all can be infused into smoothly.
- (2) Included FP101 follower plate, can be used with higher viscosity grease or cold areas.

Model	Capacity	Air Input Pressure	Pressure Ratio	Grease Output Pressure	Deliver Rate	Hose Length	N.W.	G.W.	CUFT
SK101	20L	3-7 bar 40-100 psi	55 : 1	165-385 bar 2200-5500 psi	2 g/cycle	10 ft	15.0 kgs	17.5 kgs	5.5'
SK201									
SK301									



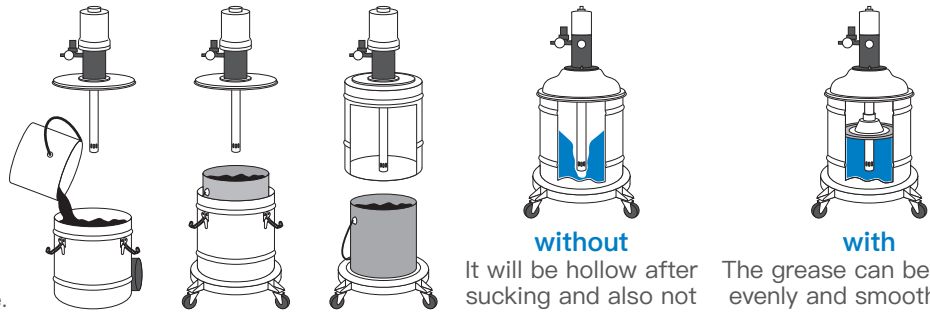
LA101

LA201

LA301

FP101

Follower Plate (5 gallons)



without

It will be hollow after sucking and also not easy to suck.

with

The grease can be sucked evenly and smoothly with follower plate.

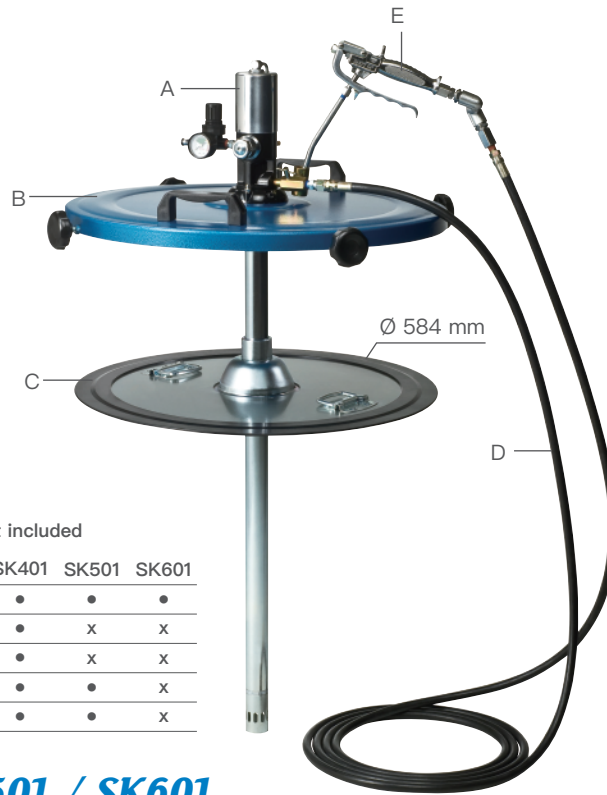
Air Operated Fluid Pump / Grease Pump Feature

- (1) Pump moves and grease suction are two separation system, it won't contaminating grease.
- (2) Typically used in workshops, service stations, fleet maintenance, mining, agriculture, armed forces, construction, trains, etc.
- (3) The pump is made of aluminum alloy by forging.
- (4) The inner diameter of the barrel is 350mm, which can accommodate 5-gallon containers of original grease from various countries.

Usage

- (1) General 00#-3# grease all can be infused into smoothly.
- (2) Included FP101 follower plate, can be used with higher viscosity grease or cold areas.

Model	Capacity	Air Input Pressure	Pressure Ratio	Grease Output Pressure	Deliver Rate	Hose Length	N.W.	G.W.	CUFT
LA101	20L	4-9 bar 60-130 psi	45 : 1	180-405 bar 2700-5850 psi	9 g/cycle	10 ft	18.5 kgs	21.0 kgs	5.3'
LA201							19.8 kgs	22.8 kgs	6.2'
LA301							16.6 kgs	21.1 kgs	

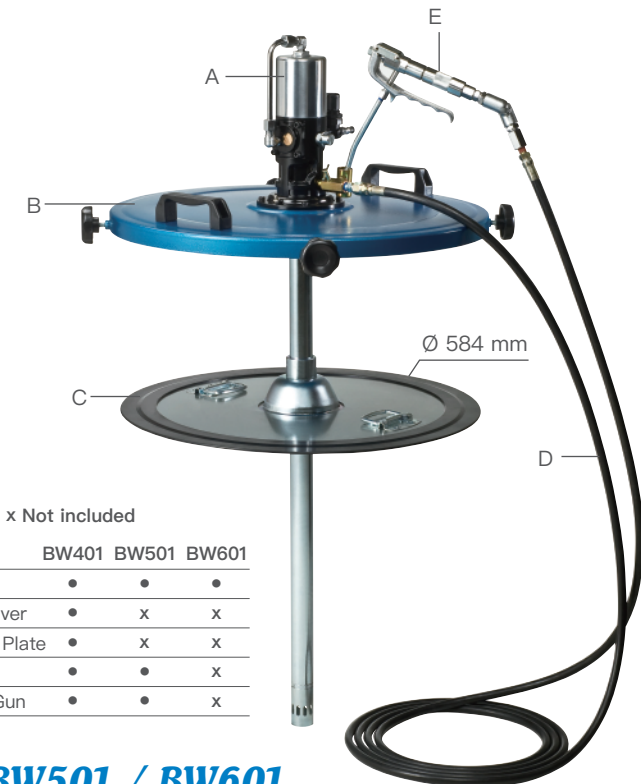


Accessory • Included x Not included

Index	Parts No	Item	SK401	SK501	SK601
A	SK200L	Pump	•	•	•
B	FP411	Drum Cover	•	x	x
C	FP501	Follower Plate	•	x	x
D	GH-220-TG Hose		•	•	x
E	G300	Grease Gun	•	•	x

SK401 / SK501 / SK601

Air Operated Fluid Pump / Grease Pump



Accessory • Included x Not included

Index	Parts No	Item	BW401	BW501	BW601
A	BW200L	Pump	•	•	•
B	FP401	Drum Cover	•	x	x
C	FP501	Follower Plate	•	x	x
D	GH-220-TG Hose		•	•	x
E	G200	Grease Gun	•	•	x

BW401 / BW501 / BW601

Air Operated Fluid Pump / Grease Pump

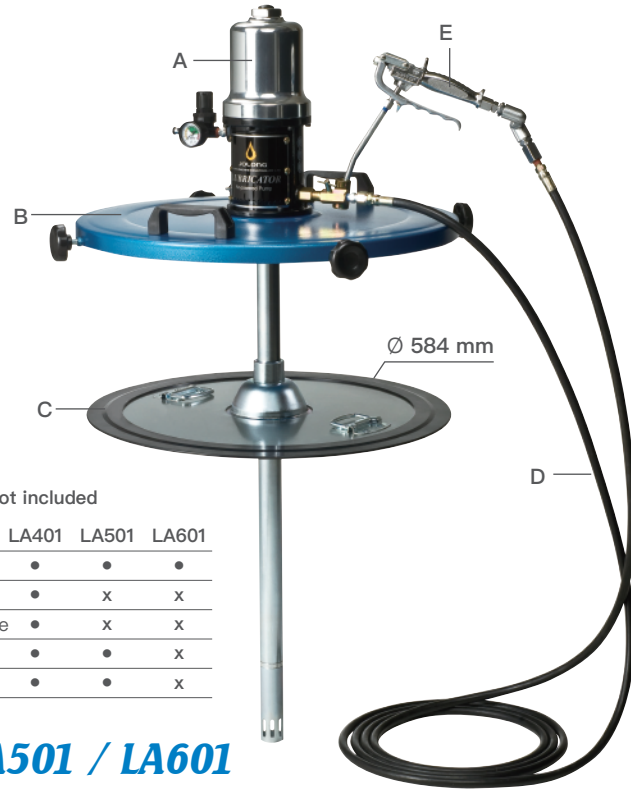
Feature

- (1) Pump moves and grease suction are two separation system, it won't contaminating grease.
- (2) Typically used in workshops, service stations, fleet maintenance, mining, agriculture, armed forces, construction, trains, etc.
- (3) Low noise, smooth greasing, no disjointed greasing.
- (4) The pump is made of aluminum alloy by forging.
- (5) The BW series is designed for high-pressure output, making it suitable for long-distance transportation.

Usage

- (1) General 00#~3# grease all can be infused into smoothly.
- (2) Included FP501 follower plate, can be used with higher viscosity grease or cold areas.

Model	Capacity	Air Input Pressure	Pressure Ratio	Grease Output Pressure	Deliver Rate	Hose Length	N.W.	G.W.	CUFT
SK401	200L	3-7 bar 40-100 psi	55 : 1	165-385 bar 2200-5500 psi	2 g/cycle	20 ft	19.2 kgs	21.5 kgs	2.3'
SK501						9.3 kgs	10.4 kgs	1'	
SK601						-	5.7 kgs	6.9 kgs	
BW401		20 ft	20.5 kgs	22.8 kgs		2.3'			
BW501		2-5 bar 30-75 psi	80 : 1	160-400 bar 2400-6000 psi		10.3 kgs	11.5 kgs	1'	
BW601		-				6.8 kgs	8.0 kgs		



Accessory • Included × Not included

Index	Parts No	Item	LA401	LA501	LA601
A	LA200L	Pump	•	•	•
B	FP401	Drum Cover	•	×	×
C	FP501	Follower Plate	•	×	×
D	GH-220-TG Hose		•	•	×
E	G300	Grease Gun	•	•	×

LA401 / LA501 / LA601

Air Operated Fluid Pump / Grease Pump

Feature

- (1) Pump moves and grease suction are two separation system, it won't contaminating grease.
- (2) Typically used in workshops, service stations, fleet maintenance, mining, agriculture, armed forces, construction, trains, etc.
- (3) The pump is made of aluminum alloy by forging.

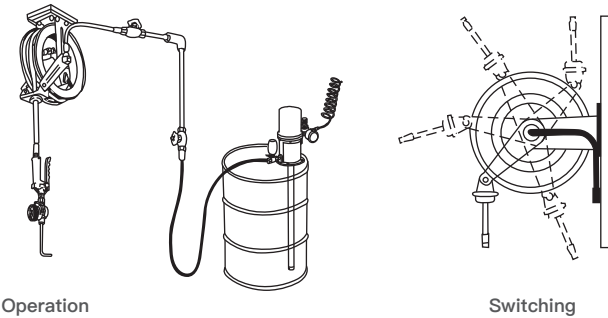
Usage

- (1) General 00#-3# grease all can be infused into smoothly.
- (2) Included FP501 follower plate, can be used with higher viscosity grease or cold areas.

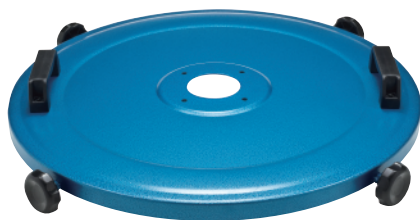
Model	Capacity	Air Input Pressure	Pressure Ratio	Grease Output Pressure	Deliver Rate	Hose Length	N.W.	G.W.	CUFT
LA401	200L	4~9 bar 60~130 psi	45 : 1	180~405 bar 2700~5850 psi	9 g/cycle	20 ft	26.5 kgs	28.5 kgs	2.5'
14.5 kgs							15.5 kgs	1.2'	
LA601						-	10.0 kgs	11.0 kgs	



RE010 / RE020 Hose Reels



Model	Applied to	Inlet	Outlet	N.W.	G.W.	Hose Length	Packing
RE010	Grease	1/4"	1/4"	19.2 kgs	20.2 kgs	1/4" x 15 M	Box
RE020	Oil	1/2"	1/2"	19.8 kgs	20.8 kgs	1/2" x 15 M	Box

**FP401**

Drum Cover For LA, BW Series (50 gallons)

**FP411**

Drum Cover For SK Series (50 gallons)

**FP501**

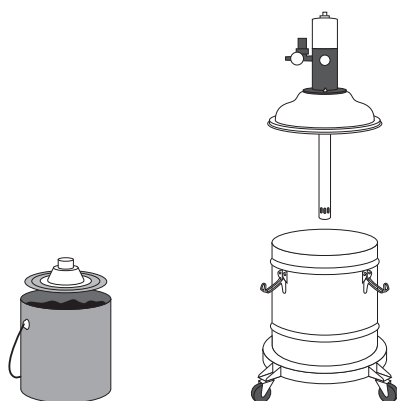
Follower Plate (50 gallons)

**FP101**

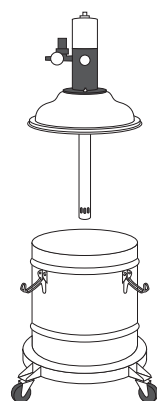
Follower Plate (5 gallons)

Drum Cover Specification

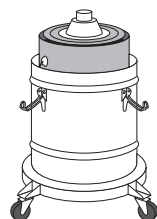
Model	Compatible Container	OD	ID
FP101	20L/5 gallons	278 mm	38 mm
FP501	200L/50 gallons	584 mm	38 mm



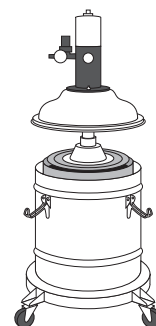
Place the follower plate into the original container, ensuring the bowl is filled with grease.



Separate the container body from the base.



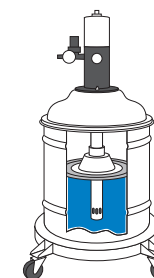
Move the original barrel into the container.



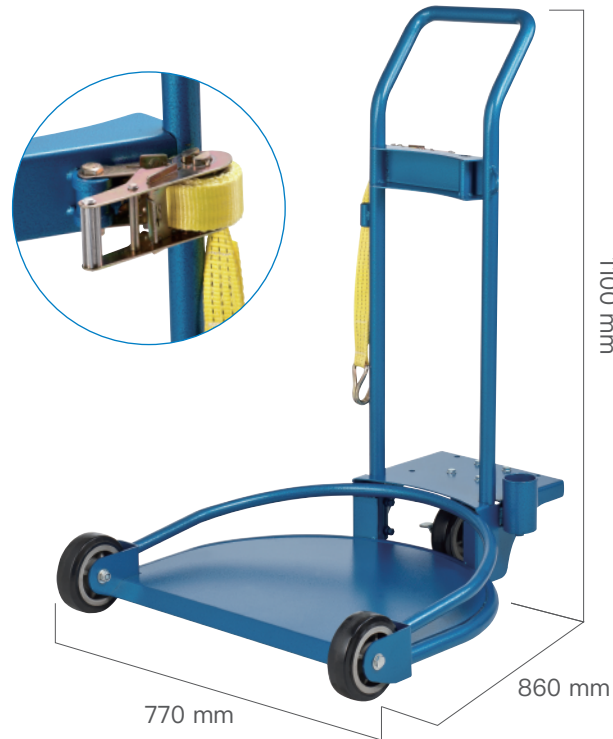
Align the suction tube with the central hole of the follower plate and insert.

without

It will be hollow after sucking and also not easy to suck.

with

The grease can be sucked evenly and smoothly with follower plate.



TR200 200L Oil Drum Trolley

Feature

- (1) Easy to move, saving time and effort.
- (2) Equipped with heavy-duty cargo straps to secure the oil barrel and prevent tipping.

※ Assembly required.

Model	Packing	N.W.	G.W.	CUFT
TR200	Box	31.6 kgs	35.6 kgs	6.9

Applications of Various Accessories:



- Can be used with grease/oil hose reel to extend working range.



- Optional Hose Reels allow extended reach and convenient hose management.



- Compatible with our company's 200-liter pumps (e.g., grease, lubricating oil, organic solvents, etc.).



- Diagram of lubricating oil container.

**OF301****OF302****OF501**

Pneumatic Lubricating Oil / Gear Oil Pump

Feature

- (1) Pump moves and oil suction are two separation system, it won't contaminating grease.
- (2) Typically used in workshops, service stations, fleet maintenance, mining, agriculture, armed forces, construction, trains, etc.
- (3) Use pneumatic pump, no need for electric power, can be used in places with flammable substances, such as, gas station, car maintenance plant etc.
- (4) The pump is made of aluminum alloy by forging.

Usage

- (1) OF301, OF501 suitable to pump 0#~120# engine oil or general non-corrosive solvent.
- (2) OF302 suitable to pump 140#~200# gear oil or general non-corrosive solvent.
- (3) If you want to know how much added oil volume is, we suggest you buy flow meter extra. (Model: M101, M201, M202 There are three types for your option.)
- (4) If you want to pump the oil to long distance, we'd suggest hose reel be purchased extra. (Model: RE020)

Model	Capacity	Air Input Pressure	Pressure Ratio	Oil Output Pressure	Deliver Rate	Hose Length	N.W.	G.W.	CUFT
OF301	200L	4~9 bar 60~130 psi	5 : 1	20~45 bar 300~650 psi	140 c.c/cycle	20 ft	15.6 kgs	16.7 kgs	1.2'
OF302			16 : 1	64~144 bar 960~2080 psi	80 c.c/cycle		16.1 kgs	17.2 kgs	
OF501		1 : 1	4~9 bar 60~130 psi	150 c.c/cycle	9.2 kgs		11.2 kgs	1.0'	

OF611

OF601
OF602

Wall-Mounted Type Pneumatic Lubricating Oil / Gear Oil Pump Feature

- (1) Pump moves and oil suction are two separation system, it won't contaminating grease.
- (2) Use pneumatic pump, no need for electric power, can be used in places with flammable substances, such as, gas station, car maintenance plant etc.
- (3) Big flow design, suitable for oil packaging factory or place where not need for pressing.
- (4) Wall-mount design, suitable for certified area work or production line.
- (5) The pump is made of aluminum alloy.

Usage

- (1) Pressure ratio 1:1 is suitable for extracting #0-#120 engine oil and general non-corrosive solvents, or for short-distance oil transfer.
- (2) Pressure ratio 5:1 is suitable for extracting #0-#120 engine oil and general non-corrosive solvents, or for medium-distance oil transfer.
- (3) Pressure ratio 16:1 is suitable for extracting #140-#200 gear oil and general non-corrosive solvents, or for long-distance oil transfer.
- (4) To monitor the amount of oil dispensed, it is recommended to use a flow meter. (Model: M101、M201、M202)

Model	Capacity	Air Input Pressure	Pressure Ratio	Oil Output Pressure	Deliver Rate	Hose Length	N.W.	G.W.	CUFT
OF611	200L	4-9 bar 60-130 psi	1 : 1	4-9 bar 60-130 psi	150 c.c/cycle	20 ft	12 kgs	13.3 kgs	2.5'
OF601			5 : 1	20-45 bar 300-650 psi	140 c.c/cycle		15.5 kgs	16.8 kgs	
OF602			16 : 1	64-144 bar 960-2080 psi	80 c.c/cycle		16.0 kgs	17.3 kgs	



OF201 / OF202
(40L)



OF205
(60L)

Pneumatic Lubricating Oil / Gear Oil Pump

Feature

- (1) Pump moves and oil suction are two separation system, it won't contaminating grease.
- (2) Typically used in workshops, service stations, fleet maintenance, mining, agriculture, armed forces, construction, trains, etc.
- (3) Use pneumatic pump, no need for electric power, can be used in places with flammable substances, such as, gas station, car maintenance plant etc.
- (4) The pump is made of aluminum alloy.

Usage

- (1) OF201, OF205 are suitable for extracting #0-#120 engine oil and general non-corrosive solvents.
- (2) OF202 is suitable for extracting #140-#200 gear oil and general non-corrosive solvents.
- (3) To monitor the amount of oil dispensed, it is recommended to use a flow meter.
(Model: M101, M201, M202)

Model	Capacity	Air Input Pressure	Pressure Ratio	Oil Output Pressure	Deliver Rate	Hose Length	N.W.	G.W.	CUFT
OF201	40L	4-9 bar 60-130 psi	5 : 1	20-45 bar 300-650 psi	140 c.c/cycle	10 ft	22.5 kgs	26.5 kgs	9.5'
OF202			16 : 1	64-144 bar 960-2080 psi	80 c.c/cycle				
OF205	60L	1 : 1	4-9 bar 60-130 psi	150 c.c/cycle	20.5 kgs		24.5 kgs	11.2'	

**GF501****GF511**

Air Operated Diesel Oil Pump Feature

- (1) The machine uses special oil seal. It can suction engine oil and general organic solvent (example: gasoline, diesel oil, toluene), but it can't suction acidity solvent or alkaline solvent. (example: sulfuric acid, hydrochloric acid.)
- (2) Typically used in workshops, service stations, fleet maintenance, mining, agriculture, armed forces, construction, trains, etc.
- (3) Use pneumatic pump, no need for electric power, can be used in places with flammable substances, such as, gas station, car maintenance plant etc.
- (4) The pump is made of aluminum alloy.

Model	Capacity	Air Input Pressure	Pressure Ratio	Oil Output Pressure	Deliver Rate	Hose Length	N.W.	G.W.	CUFT
GF501	200L	4-9 bar 60-130 psi	1 : 1	4-9 bar 60-130 psi	150 c.c./cycle	20 ft	9.2 kgs	10.4 kgs	1.0'
GF511			5 : 1	20-45 bar 300-650 psi	140 c.c./cycle		15.7 kgs	17.2 kgs	1.2'

**PF601**

Food-Grade Stainless Steel Pneumatic Fluid Pump Feature

- (1) The pump action and oil pumping are two independent systems, and the compressed air will not contaminate the extracted raw materials.
- (2) The contact material part uses 304 stainless steel and PTFE seals, which can be used in food factories to extract food, chemical raw materials, or chemical plants to extract slightly acidic and alkaline materials.
- (3) The pump body is made of high-strength aluminum alloy segments.

Usage

- (1) The pressure ratio of 20:1 is suitable for extracting high-viscosity food materials and can also be used to extract general paint.
- (2) The pressure ratio of 6:1 is suitable for extracting low-viscosity food materials or for extracting slightly acidic and alkaline materials in chemical plants.

**PF602**

Model	Capacity	Air Input Pressure	Pressure Ratio	Oil Output Pressure	Deliver Rate	N.W.	G.W.	CUFT
PF601	20L	3-9 bar 40-130 psi	20 : 1	4-9 bar 60-130 psi	25 c.c/cycle	9.2 kgs	10.4 kgs	1.0'
PF602	200L		6 : 1	18-54 bar 250-770 psi	140 c.c/cycle	15.7 kgs	17.2 kgs	1.2'

**HO701****HO501****HG101**

Hand Operated Oil Pump / Gear Oil Pump

Feature

- (1) Move easily, can be used in various occasion.
- (2) Model HO501 suitable for original 5 gallon tank oil or gear oil from every country.

Usage

- (1) Suitable for lubricant oil or gear oil:all can be infused into smoothly.
- (2) If you want to know how much added oil volume is, we suggest you buy flow meter extra. (Model: M101, M201, M202. There are two types for your option.)

Hand Operated Grease Pump

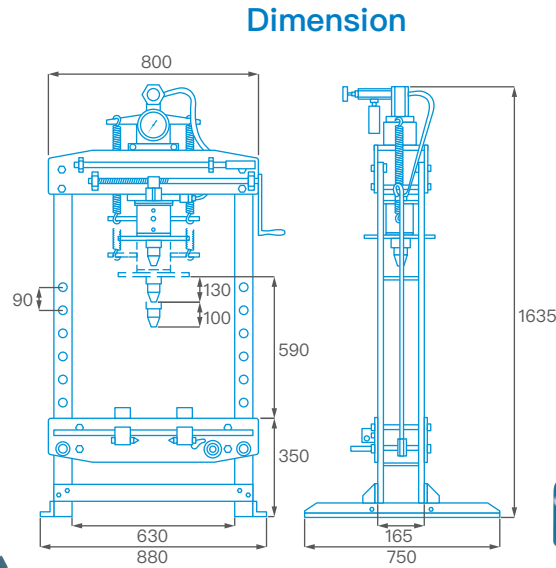
Feature

- (1) Inside diameter (ID) of barrel is 350mm. The inside height of barrel is 365mm. It can contain world wide original barrels of 5 gallons.

Model	Capacity	Deliver Rate	Hose Length	N.W.	G.W.	CUFT
HO701	20L	100 c.c/cycle	6 ft	6.5 kgs	7.5 kgs	2.2'
HO501				4.5 kgs	5.0 kgs	1.0'
HG101	30L	3.6 g/cycle		10.5 kgs	13.5 kgs	5.1'



HP151

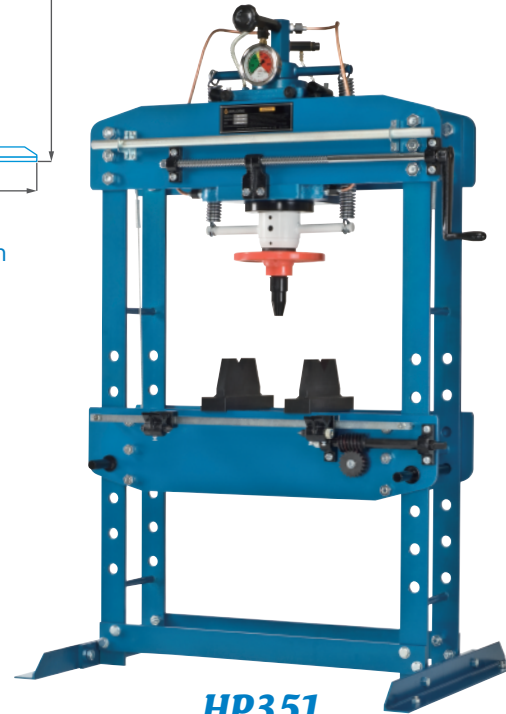


Dimension tolerances within ± 5 mm are considered normal.

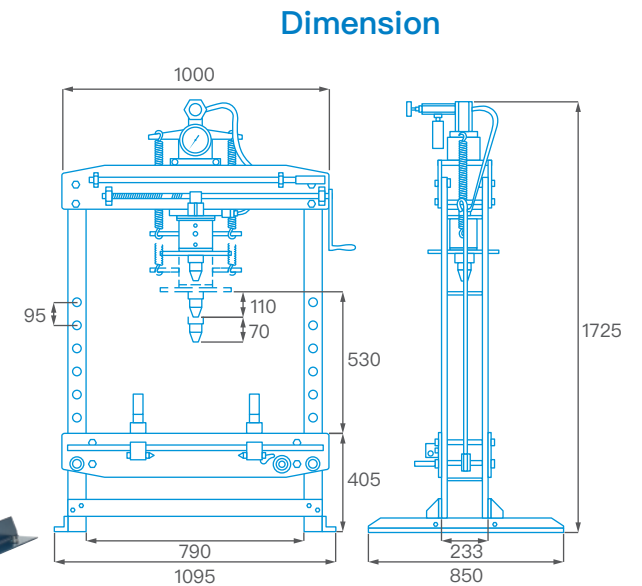
15 TON / 35TON Manual Hydraulic Press

Feature

- (1) Can be operated manually. No electricity is needed.
- (2) Work table can freely adjust working distance (up-down) as per the size of work piece.
- (3) Professional manual hydraulic press: Unnecessary & efficient instrument for repairing and maintaining machinery, mold and automobile.
- (4) Hydraulic main body can adjust freely work distance (left/right) as per size of work piece.
- (5) Suitable to be applied for such functions as bending, deforming, rectifying, modeling or for bearing and gear shaft arbor getting pressed in or enforcing out.
- (6) HP351 Equipped with dual-speed high/low pressure: The operation is quick and convenient. Also, pressure safety valve is also equipped. When pressure exceeds 40 ton and above, it will release pressure automatically.

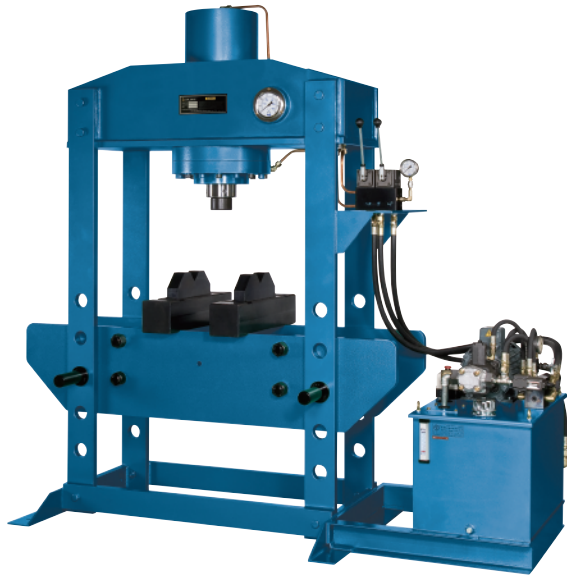


HP351

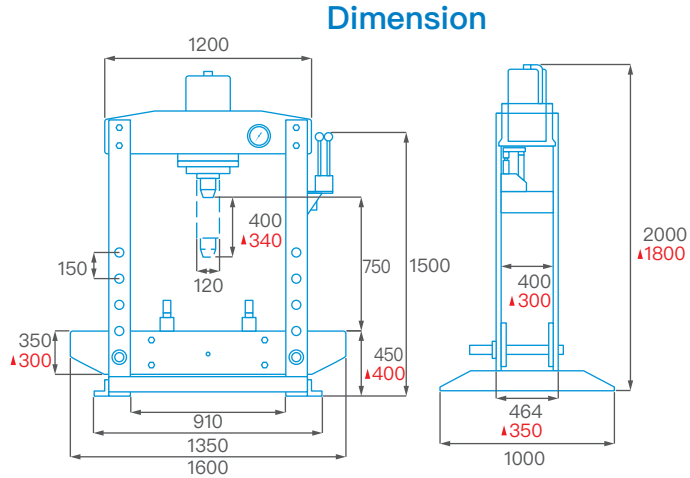


Dimension tolerances within ± 5 mm are considered normal.

Model	Capacity	Cylinder Bore	Pressure	Cylinder Stroke	Packing	N.W.	G.W.	CUFT
HP151	15 TON	Ø 80 mm	300 kg/cm ²	130 mm	Wooden Crate	172.0 kgs	210.0 kgs	25'
HP351	35 TON	Ø 125 mm		110 mm		310.0 kgs	365.0 kgs	37'



HP602 / HP1002



▲ Applicable to HP602 dimensions.

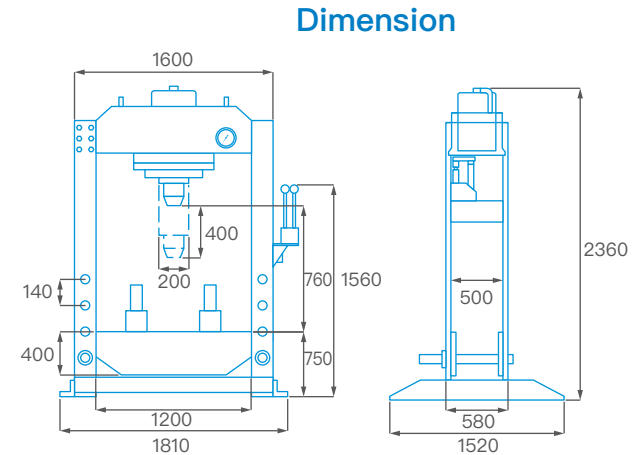
Dimension tolerances within ±5 mm are considered normal.

60TON / 100TON / 150 TON Automatic Hydraulic Press Feature

- (1) Work table can freely adjust working distance (up-down) as per the size of work piece.
- (2) Suitable to be applied for such functions as bending, deforming, rectifying, modeling or for bearing and gear shaft arbor getting pressed in or enforcing out.
- (3) Suitable for large-sized vehicles, ships, or steel / iron industries, agricultural machinery, miner machinery, etc. Best helper to the production and repair of work piece of big size.
- (4) Electric hydraulic press is equipped with dual-speed high/low pressure: The operation is quick and convenient. Also, pressure safety valve is also equipped. When pressure exceeds what it is supposed to be, it will release pressure automatically. The operation is quite safe, quick and convenient.
- (5) HP602 and HP1002 use the main hydraulic cylinder with a chain, allowing easy adjustment of the worktable height.
- (6) HP1502 Working bench adjust height by oil cylinder, it can simplify difficulty of operation.

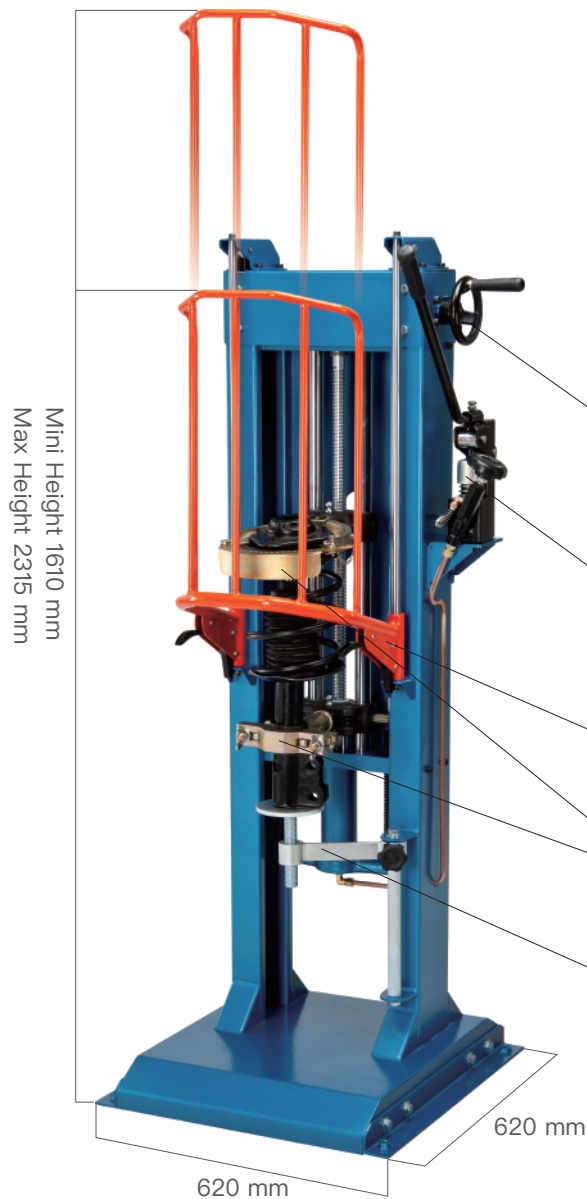


HP1502



Dimension tolerances within ±5 mm are considered normal.

Model	Capacity	Cylinder Bore	Pressure	Cylinder Stroke	Packing	N.W.	G.W.	CUFT
HP602	60 TON	Ø 200 mm		340 mm	Wooden Crate	956.0 kgs	1076.0 kgs	174'
HP1002	100 TON	Ø 250 mm	220 kg/cm ²	400 mm		1386.0 kgs	1550.0 kgs	200'
HP1502	150 TON	Ø 300 mm		400 mm		3200.0 kgs	3400.0 kgs	240'



HA101 Shock Absorbers Spring Compressor Feature

- (1) Suitable for various of shock absorbers which can be dismantled from vehicles.
- (2) To be operated manually; no electricity is needed. The operation is quite easy. It is both convenient and safe.
- (3) Equipped protect shield and support plate; can effectively protect the safety of operating personnel.
- (4) Professional spring compressor; Equipped with many sorts of clamping device; can be freely coordinated & Matched for better usage. This makes your job process safer and quicker.

Hand Wheel

Hand wheel can be used to adjust the clamp holder level, to adapt the different lengths of shock absorber spring.

High Quality Hydraulic Pump

High quality hydraulic pump provides stable hydraulic pressure on the operation of the machine.

Protect Shield

Protect shield can effectively protect the safety of operating personnel.

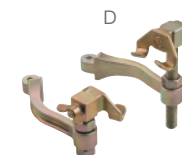
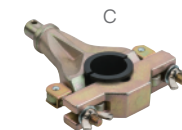
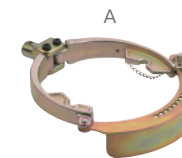
Multipurpose Holder

Multipurpose holders can be used with different clamp to accommodate different types of shock absorbers.

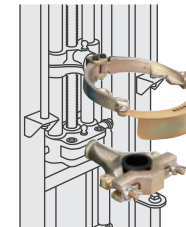
Support Plate

Support plate can be used to assist support the shock absorbers, to avoid shock absorbers are not fixed completely and fall.

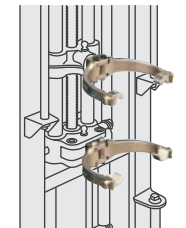
Standard Accessories



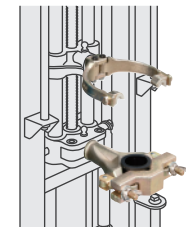
Model 1 (A+C)



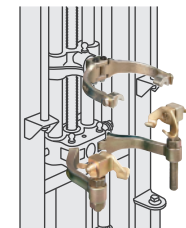
Model 2 (B+B)



Model 3 (B+C)



Model 4 (B+D)



These are only some of the usage demonstration, as per conditions to choose clamps.

Model	Packing	N.W.	G.W.	Cuft
HA101	Wooden Crate	114 kgs	148 kgs	34.6'



G100

Oil Gun Pressure
resistant: 70 bar



G102

Oil Gun with Digital Meter
(Battery not included)



G101

Oil Gun with
Flow Meter



M101

Flow Meter
1 division = 100 cc
1 revolution = 5 liters



M201

Digital Flow Meter
(Battery not included)



M202

Digital Flow Meter
(Battery not included)

Model	Inlet	Outlet	N.W.	Lubricating Oil	Coolant	Diesel	Toluene	Battery Specifications
G100	1/2"	-	619.0 g	○	○	○	X	N/A
G102	1/2"	-	1183.5 g	○	○	○	X	AA battery
G101	1/2"	-	1224.0 g	○	○	X	X	N/A
M101	1/4"	1/4"	575.5 g	○	○	X	X	N/A
M201	1/2"	1/2"	500.0 g	○	○	○	X	AA battery
M202	1/2"	1/2"	620.0 g	○	○	○	X	CF1/2AA lithium battery



G3004
Extend Pipe for
Small Hole



G3003
Extend Pipe with
Standard Coupler



G3008
Flexible Extend Hose with
Standard Coupler(10'')



G3006
Standard Coupler



G3007
Small Hole Injecting
Connector



G3001
Upper Side of High Pressure
Grease Gun



G3002
Z Type Swivel



G300
High Pressure
Grease Gun
Pressure resistant: 400 bar



G200
High Pressure
Grease Gun
Pressure resistant: 650 bar

Model	Inlet	Outlet	N.W.
G3004	1/8"	2 mm	41.0 g
G3003	1/8"	-	65.0 g
G3008	1/8"	-	72.5 g
G3006	1/8"	-	33.0 g
G3007	1/8"	2 mm	9.0 g

Model	Inlet	Outlet	Max. Input Pressure	N.W.
G3001	1/4"	-	400 bar	761.0 g
G3002	1/4"	1/4"	650 bar	363.0g
G300	1/4"	-	400 bar	1124.0 g
G200	1/4"	-	650 bar	1072.0 g



G350 Preset Grease Gun Feature

- (1) Flow range: 1~2 kg/min
- (2) Accuracy: $\pm 0.5\%$
- (3) Repeatability: 0.2%
- (4) Operating temperature: $+2^{\circ}\text{C}$ to $+50^{\circ}\text{C}$
- (5) Maximum operating pressure: 300 bar
- (6) Minimum preset value: 0.01 kg, Maximum: 999.9 kg.
- (7) Selectable measurement units.
- (8) Preset grease quantity function.
- (9) Automated dosing function: allows the gun to automatically stop when the preset grease amount is reached, providing a degree of automation.
- (10) Calibration function: allows the user to calibrate the flow meter.



NP010 Grease Gun with Flow Meter Feature

- (1) Flow range: 0.1~2.5 kg/min
- (2) Accuracy: $\pm 3\%$
- (3) Repeatability: $\pm 1\%$
- (4) Operating temperature: -10°C to $+60^{\circ}\text{C}$
- (5) Maximum operating pressure: 500 bar
- (6) High-pressure resistant, easy to calibrate, with a Z-type swivel.
- (7) Suitable for all grease measurement needs when injecting through grease fittings.



G300M Grease Gun with Flow Meter Feature

- (1) Flow range: 0.1~2.5 kg/min
- (2) Accuracy: $\pm 3\%$
- (3) Repeatability: $\pm 1\%$
- (4) Operating temperature: -10°C to $+60^{\circ}\text{C}$
- (5) Maximum operating pressure: 400 bar
- (6) High-pressure resistant, easy to calibrate, with a Z-type swivel.
- (7) Suitable for all grease measurement needs when injecting through grease fittings.



M501 Grease Flow Meter Feature

- (1) Flow range: 0.1~2.5 kg/min
- (2) Accuracy: $\pm 3\%$
- (3) Repeatability: $\pm 1\%$
- (4) Operating temperature: -10°C to $+60^{\circ}\text{C}$
- (5) Maximum operating pressure: 500 bar
- (6) High-pressure resistant, easy to calibrate, compact size

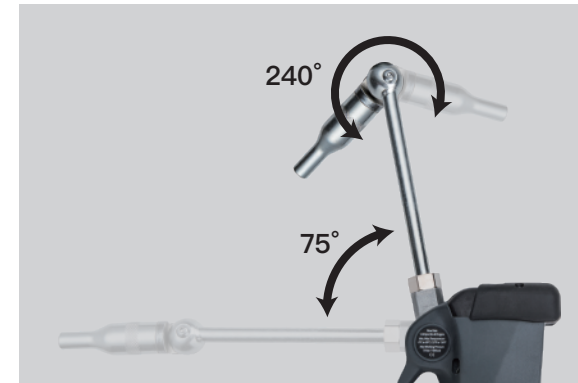
Model	Product Name	Fluid Type	No Drip Function	Flow Range		Applicable Pressure		Battery	Inlet	Weight
G350	Preset Grease Gun	lubricant	YES	0.1~2kg	0.4~4lb	300bar	4250psi	AA	1/4" BSP	1.7kg
NP010	Grease Gun with Flow Meter	lubricant	YES	0.1~2kg	0.4~4lb	500bar	7500psi	AA	1/4" BSP	1.62kg
G300M	Grease Gun with Flow Meter	lubricant	YES	0.1~2kg	0.4~4lb	400bar	5600psi	AA	1/4" BSP	1.7kg
M501	Grease Flow Meter	lubricant	N/A	0.1~2kg	0.4~4lb	500bar	7500psi	AA	1/8" BSP	0.64kg



P-004SA
Preset Oil Gun

P-004SA Preset Oil Gun Feature

- (1) Flow range: 1~30 liters/min
- (2) Accuracy: $\pm 0.5\%$
- (3) Repeatability: $\pm 0.2\%$
- (4) Maximum fluid viscosity: 2000 cSt
- (5) Maximum operating pressure: 70 bar
- (6) Minimum preset value: 0.1 liter, Maximum: 99.9 liters
- (7) Selectable measurement units
- (8) Preset lubricant quantity function.
- (9) Automated dosing: allows the system to stop automatically when the preset lubricant amount is reached.
- (10) Calibration function: allows the user to calibrate the flow meter.



Anti-drip



High protection



Sealed battery box



Preset quantity



Uses oval gears

Model	Product Name	Fluid Type	No Drip Function	Flow Range	Applicable Pressure	Battery	Interface	Weight
P-004SA	Preset Oil Gun	lubricant	YES	1/30 l/min 0.26/7.8 gpm	70bar 994psi	AAA	1/2" BSP	2.3kg



JOLONG

JOLONG MACHINE INDUSTRIAL CO., LTD

No. 88, Lane 6, Jianxing Rd., Dali Dist., Taichung City 41277, Taiwan

T : 886-4-24927009

E : sales@jolong.com.tw

F : 886-4-24927007

W : www.jolong.com.tw



Website



YouTube

