

# LA301 | 雷龍氣動流體幫浦

## AIR OPERATED FLUID PUMP

### 特點

- (1) 幫浦動作及抽油為兩個獨立系統，壓縮空氣不會污染桶內油脂。
- (2) 典型的使用範圍為工廠、汽修廠、船舶保養、採礦機械、農耕、軍隊、建築、大眾運輸等。
- (3) 幫浦本體材質採用高強度鋁合金鍛造成型。

### 用油

- (1) 一般 00#~2# 黃油均能順暢注入。
- (2) 內附FP101壓力板，可搭配使用於較高黏度黃油或寒冷地區。

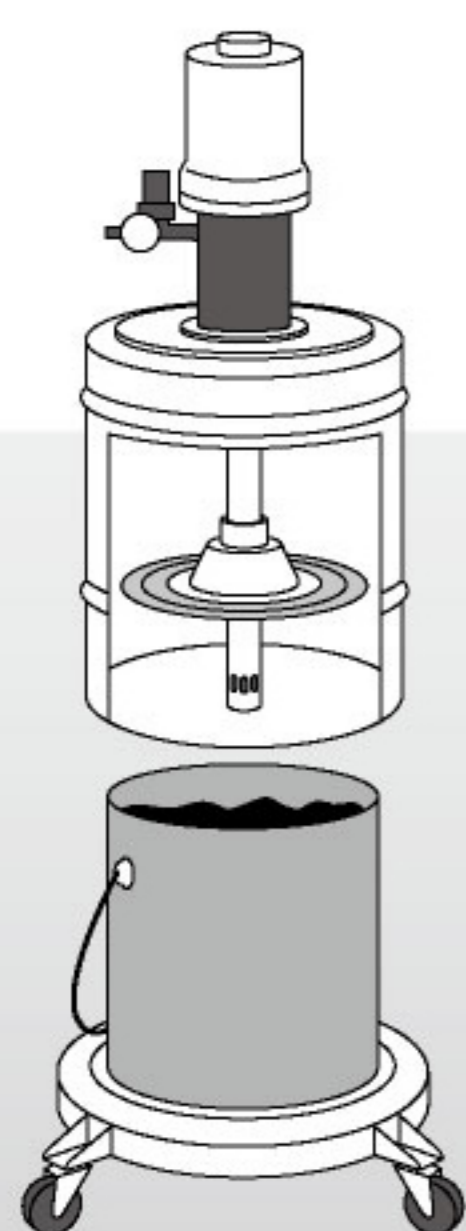
### Feature

- (1) Pump moves and oil suction are two separation system, it won't contaminating grease.
- (2) Typically used in workshops, service stations, fleet maintenance, mining, agriculture, armed forces, construction, trains, etc.
- (3) The pump is made of aluminum alloy by forging.

### Grease usage

- (1) General 00#~2# grease all can be infused into smoothly.
- (2) Included FP101 follower plate, can be used with higher viscosity grease or cold areas.

### 放入方式 How to put inside



型號 Model	容量 Capacity	空氣輸入壓力 Air Input Pressure	壓力比 Pressure Ratio	黃油輸出壓力 Grease Output Pressure	輸出量 Deliver Rate	油管長度 Hose Length	淨重 N.W.	毛重 G.W.	材積 CUFT
LA301	20L	4~9 bar 60~130 psi	45:1	180~405 bar 2700~5850 psi	9 g/cycle	10 ft	16.6 kgs	21.1 kgs	6.2'